

This NHS Trust is smokefree.

Information for visitors .

Frequently Asked Questions

What does Smokefree mean?

Smoking is not permitted inside any of the Trust's premises or anywhere in the grounds. Patients, members of the public and staff are not allowed to smoke on Trust sites.

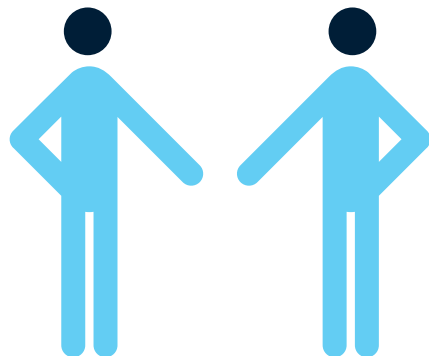
Why did we become a Smokefree site?

Four out of five people don't smoke. Complaints from patients and the public about smoking at our sites particularly around entrances were increasing. In a survey of the public and staff conducted at the Hospital, seven out of ten people said that they thought that smoking should not take place anywhere on the site. As a patient, smoking makes it harder to recover. As a health community we want to help people live a healthy life. Being a Smokefree site helps everyone by being a healthy place to visit, stay or work.

How will the Hospitals ensure it stays Smokefree?

There is nowhere to smoke on any of the Trust sites i.e. no smoking shelters. Information and the contact details of the NHS Stop Smoking Service are easily available to members of the public and for all patients at Trust sites, via GP surgeries and community health centres prior to admission. Multi-skilled VINCI Park operatives, senior management and site services staff will be on patrol 24/7 to ensure that patients, members of the public and staff do not smoke on site.

Staff are encouraged to challenge and support patients and members of the public not to smoke.



What support is available for relatives, visitors and members of the public who smoke?

For advice on Nicotine Replacement Therapy please speak to a member of staff.

For support to quit smoking long term, please contact your GP practice or the NHS Stop Smoking Service on 0800 022 4332.

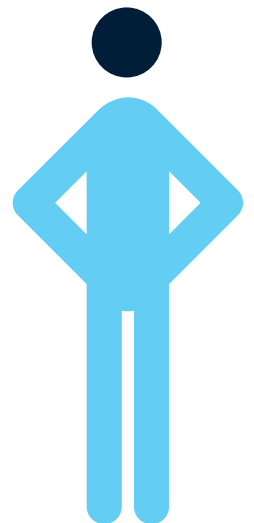
Is it a human right to be allowed to smoke?

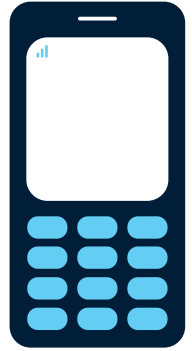
The British High Court (2008) ruled that smoking is not a basic human right. It is reasonable to expect the Trust to take action to preserve the health of patients and staff.

What happens to members of the public who smoke within the grounds?

Any member of the public smoking within Trust grounds will be approached by a member of Trust staff and asked to stop smoking. A card will be issued which asks them to stop smoking and explains why the Trust sites are Smokefree. The Trust has Zero Tolerance to violence. If any member of the public persists in smoking or becomes abusive or aggressive when asked to stop, they will be asked to leave the site by Trust security staff.

The Trust will take very seriously any member of the public smoking in secret or dangerous places either inside or outside Trust property.





This leaflet is available in large print and other formats and languages.